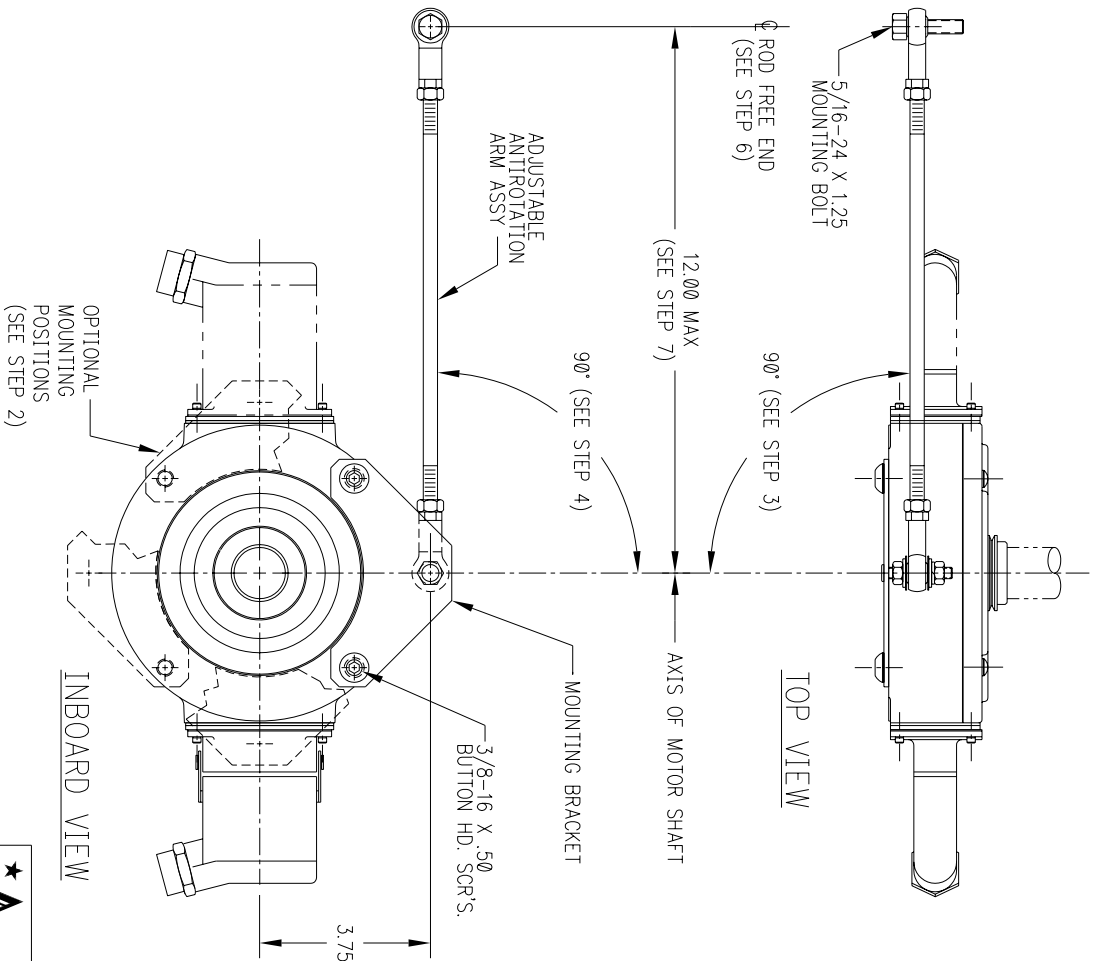
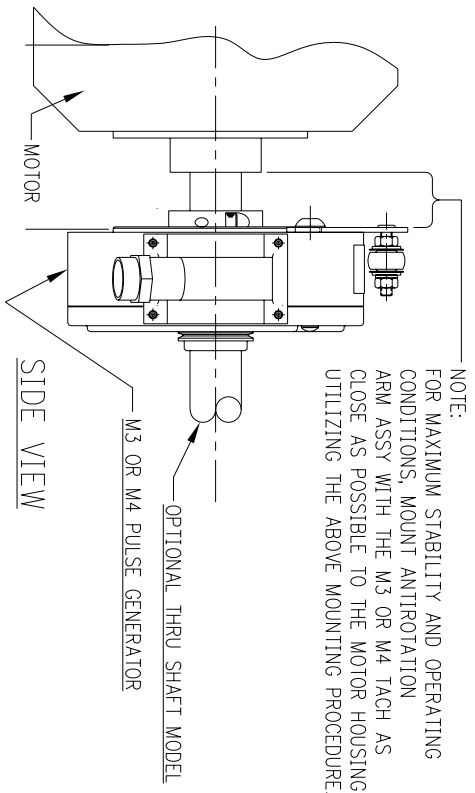


REVISONS				
ECN NO.	LTR	DESCRIPTION	DATE	APPROVED



- MOUNTING PROCEDURE:**
1. MOUNT M3/M4 WITH CONDUIT ENTRY PORTS POSITIONED HORIZONTALLY.
 2. FASTEN THE MOUNTING BRACKET TO THE INBOARD SIDE OF THE M3/M4 IN ONE OF THE FOUR POSITIONS SHOWN. USE THE TWO 3/8-16 X .50 LONG FASTENERS AND THREADLOCKER.
 3. MOUNT THE ANTIROTATION ARM PERPENDICULAR TO MOTOR SHAFT AXIS OF ROTATION. THE ARM MOUNTING BOLTS AND ASSOCIATED ROD BEARINGS SHOULD BE PARALLEL TO THE MOTOR SHAFT (TOP VIEW).
 4. MOUNT ANTIROTATION ARM APPROXIMATELY 90° TO A LINE ESTABLISHED BETWEEN THE MOUNTING BRACKET STUD AND SHAFT CENTERLINE (VIEWED FROM END).
 5. MOUNT M3/M4 AS CLOSE AS POSSIBLE TO THE MOTOR WITH THE MOUNTING BRACKET CLOSEST TO THE MOTOR.
 6. ESTABLISH A STATIONARY (STATIC) MOUNTING POINT FOR THE FREE END OF THE ANTIROTATION ARM USING THE GUIDELINES ABOVE. USE THE 5/16-24 X 1.25" BOLT TO FASTEN THE FREE END TO THE STATIONARY POINT.
 7. THE ANTIROTATION ARM IS FULLY THREADED AND CAN BE ADJUSTED IN LENGTH. THE RECOMMENDED LENGTH IS 8 TO 12 INCHES.



UNLESS OTHERWISE SPECIFIED THE ABOVE NOTES APPLY.

AVTRON MANUFACTURING, INC. 7900 E. PLEASANT VALLEY ROAD
INDEPENDENCE, OH 44131-5529

**ANTIROTATION ARM ASSY
INSTALLATION INSTRUCTIONS**

SIZE	CGE NO.	DRAWING NO.	REV.
B	01014	B27239	LTR
SCALE	MODEL	SHEET	
3/8	M3/M4	2	

THIS DOCUMENT CONTAINS PROPRIETARY INFORMATION OF AVTRON MFG., INC. AND MAY NOT BE DISCLOSED TO OTHERS OR USED FOR MANUFACTURING PURPOSES WITHOUT THE WRITTEN CONSENT OF AVTRON MFG.